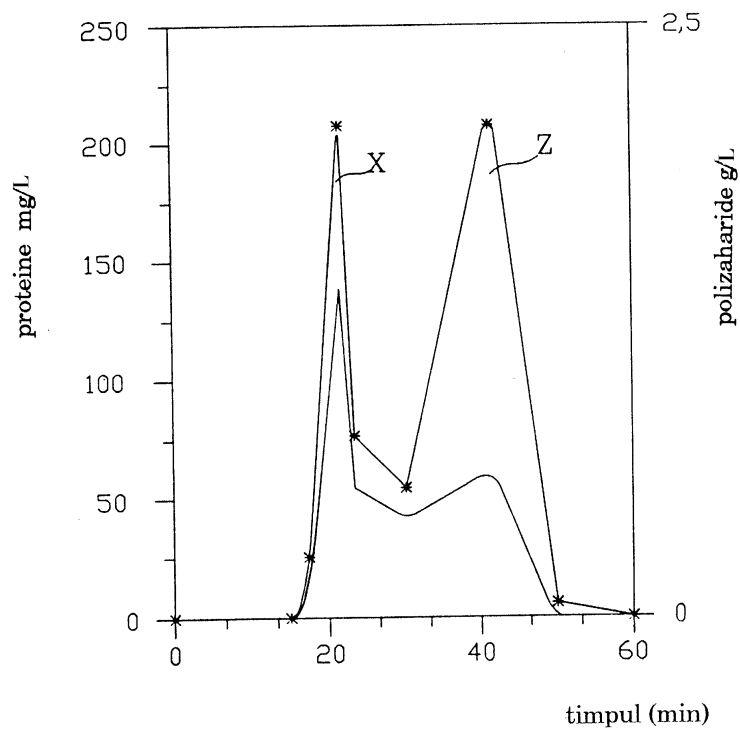


* Spectrofotometric la 225 nm (proteine)
 • Refractometric (polizaharide)

Fig. 1



* Spectrofotometric la 225 nm (proteine)
 • Refractometric (polizaharide)

Fig. 2

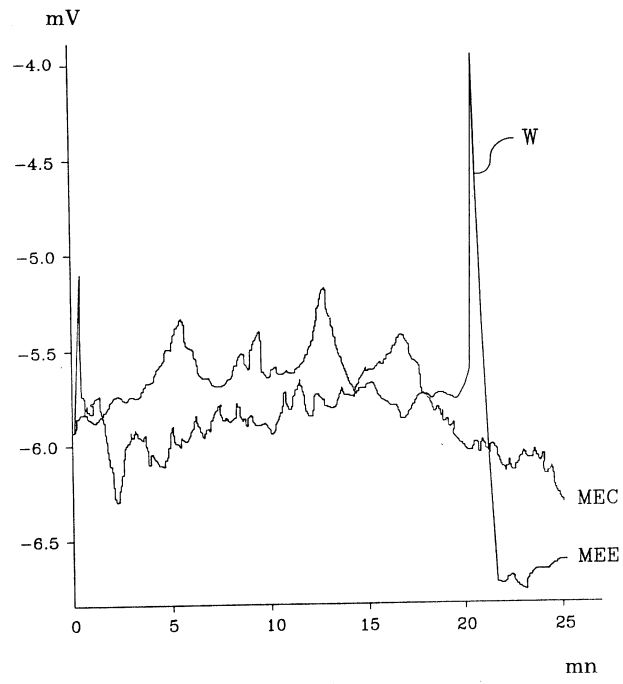


Fig. 3

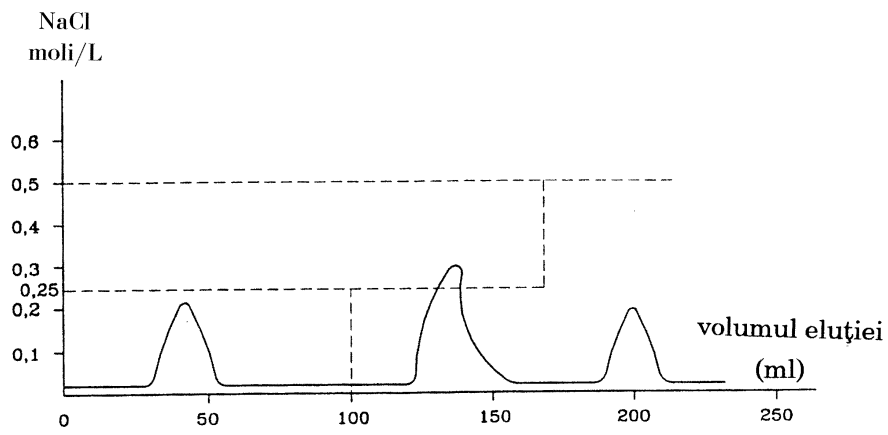


Fig. 4

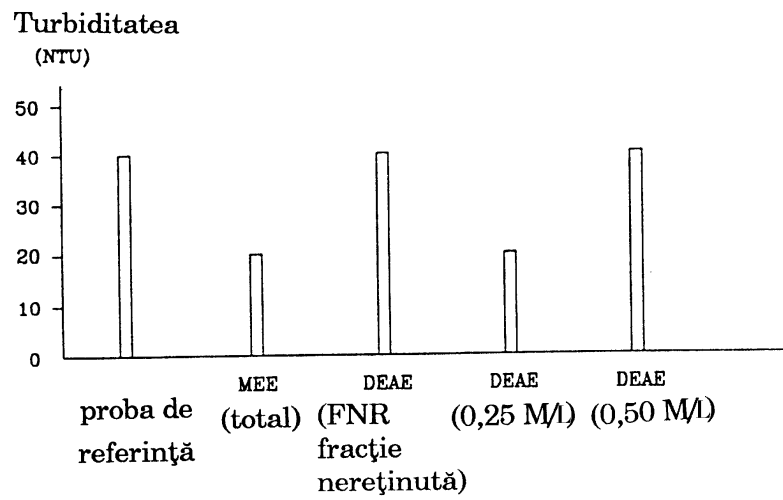


Fig. 5

α - manozida D (moli)

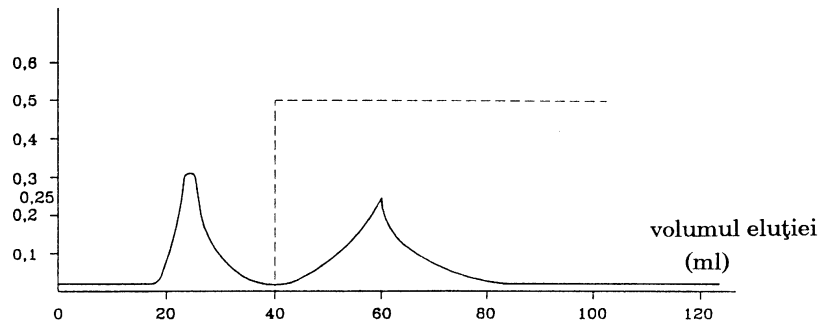


Fig. 6

Turbiditatea (NTU)

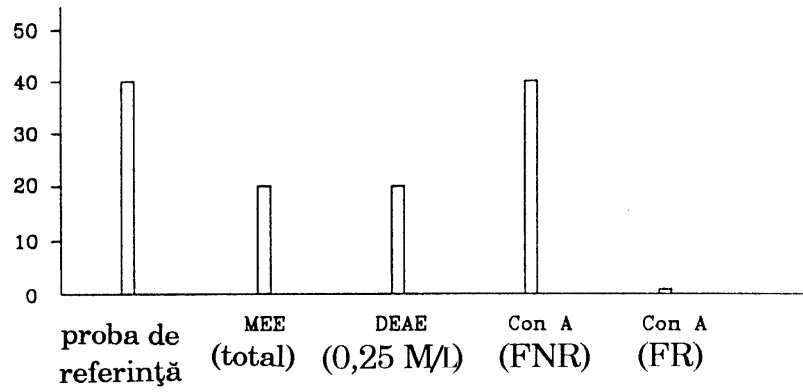


Fig. 7

% de MP32

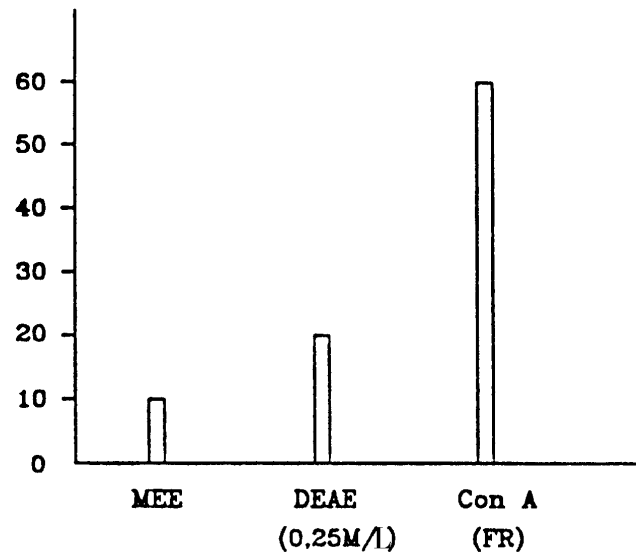


Fig. 8

% de MP32

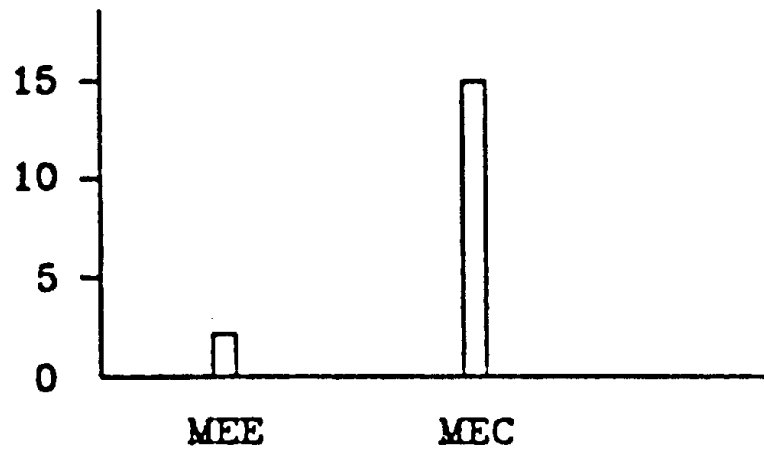


Fig. 9